




BASIS

Charter Schools

● ● ● PHOENIX PRIMARY

BASIS

 Phoenix
Primary
Grades K–5

The mission of BASIS Charter Schools is to empower students to achieve at globally competitive levels with a transformative K–12 academic program.

BASIS Phoenix Primary is a **TUITION-FREE** public charter school serving grades K–5. We offer a world-class, STEM-infused, liberal arts curriculum with a strong student support system.





WHAT MAKES BASIS CHARTER SCHOOLS' ACADEMIC PROGRAM EXCEPTIONAL?

At BASIS Charter Schools, we prepare students for success from day one. Our STEM-infused, liberal arts curriculum engages students in hands-on activities and lessons across a well-balanced variety of core courses in literacy and language, humanities, math, science, and engineering. Having such a diverse range of courses helps students make connections, build confidence, and discover new interests. Our students thrive in a diverse community that's represented by many backgrounds and perspectives, creating a culture of respect, accountability, and perseverance.

As a part of the BASIS Charter Schools network, BASIS Phoenix Primary is dedicated to raising the standards of student learning to the highest international levels. Our students engage in the world-class BASIS Charter School Curriculum, which fuels critical thinking, problem-solving, and innovation. Caring and supportive teachers lead class with creativity and intellect, inspiring students to master advanced content and love learning. To learn more, visit enrollBASIS.com/phoenix-primary.

THE BASIS CHARTER SCHOOL CURRICULUM

We are committed to the philosophy that all students can succeed when provided with an advanced curriculum and supportive, knowledgeable teachers to guide them through it. The primary BASIS Charter School Curriculum allows students to excel in our middle school and high school programs by building upon fundamentals at an accelerated pace. In addition, our expert teachers engage students in class discussions, challenge them to think critically, and help them make interdisciplinary connections.

OUR CO-TEACHING MODEL IN GRADES 1–3 SUPPORTS STUDENT ACHIEVEMENT

BASIS Charter School teachers are talented and knowledgeable educators who bring our robust curriculum to life every day in the classroom. Our co-teaching model for grades 1–3 places one Subject Expert Teacher, a content expert, and one Learning Expert Teacher, a pedagogy specialist, in each core classroom.

Subject Expert Teachers (SETs)

Subject Expert Teachers specialize in one subject, delivering lessons to different groups of students who rotate into their classroom throughout the day. They are responsible for planning, preparing, and carrying out all lessons, which are always rich in content and deep in insight. Our SETs also engage students in meaningful class discussions that enhance critical thinking skills.

Learning Expert Teachers (LETs)

Learning Expert Teachers are specialists in pedagogy. Their role is to teach students the skills necessary for academic and personal development, including study and organizational skills, critical thinking, and social interaction standards. In addition, LETs are the primary instructors for the Phonics course. The LET supports students' differentiated needs to accelerate the learning process.

Benefits of the Co-Teaching Model:

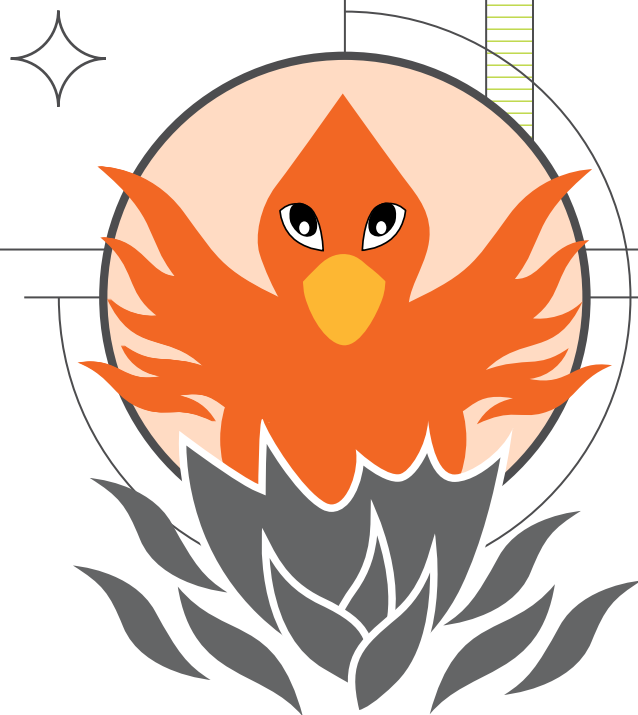
- Greater emphasis placed on a single subject
- Increased opportunity for students to gain content mastery
- More effective use of class time
- Maximized comprehension and engagement
- Individual student needs met without changing the pace of lessons





HIGHLIGHTS

BASIS Phoenix Primary opened in 2018. Since then, we have been dedicated to creating a school culture that promotes respect for others and fosters individual academic and social growth. Our students engage in a well-balanced variety of academic courses with hands-on activities and lessons. Students bring lessons to life in their Connections class, see science in action through lab experiments, and apply their knowledge through presentations and performances in other courses. Our students have a robust catalog of extracurricular activities to choose from, such as Yoga, Chess, Firebird Ambassadors, and Textile Arts & Crafts. These clubs provide students with opportunities to meet new teachers and make new friends while also leaning into their own passions and interests.

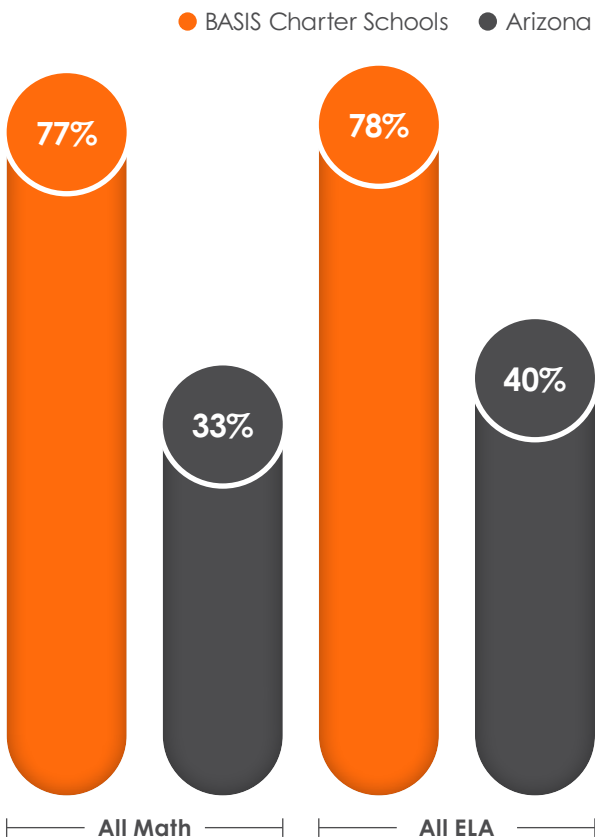


ARIZONA'S ACADEMIC STANDARDS ASSESSMENT: PERCENT PASSING

BASIS Charter Schools consistently earn higher state assessment scores than the state average. See how our average network scores compare to the average for all Arizona schools.

Grade	School	Math	ELA
3	All Arizona schools	40%	41%
3	BASIS Charter Schools	75%	76%
4	All Arizona schools	39%	44%
4	BASIS Charter Schools	73%	78%
5	All Arizona schools	37%	39%
5	BASIS Charter Schools	72%	69%
6	All Arizona schools	31%	39%
6	BASIS Charter Schools	66%	74%
7	All Arizona schools	27%	43%
7	BASIS Charter Schools	89%	89%
8	All Arizona schools	27%	36%
8	BASIS Charter Schools	92%	89%

Arizona Department of Education, 2022 & 2023*
*BASIS Charter School data is based on 2023 results, while state data is based on 2022 results. 2023 results for the state were not available at the time of publication.





KINDERGARTEN

Advanced Academics

Kindergarten at BASIS Charter Schools is designed to lay a foundation for academic success throughout the BASIS Charter School Curriculum. We focus on enhancing students' natural instincts to explore, question, and discover as they engage in hands-on activities across a variety of courses. Our kindergarten students learn grade 1 skills by the end of the year and have fun doing so.

Co-Teaching Model

Caring and supportive kindergarten teachers lead class with creativity and intellect, inspiring students to love learning. Our co-teaching model places two teachers in each classroom—one Lead Kindergarten Teacher, who is an early education expert, and one Teaching Fellow, who assists with all aspects of lessons and learning. This model creates a comprehensive learning experience and ensures that each student's needs are met.

HALF-DAY PROGRAM

- Language and Literacy Foundation
- Math Foundation
- Civics, History, and Science Foundation
- Movement Foundation

FULL-DAY PROGRAM (fee-based)

Students take all courses included in the half-day program, plus:

- Engineering and Technology Foundation
- Mandarin
- Music Foundation
- Visual Arts Foundation
- Theatre Foundation

PRIMARY SCHOOL PROGRAM

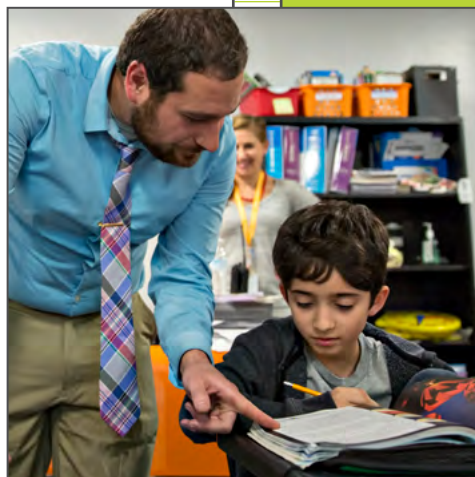
The BASIS Charter School Curriculum for grades 1–5 continues to build solid academic foundations while teaching fundamental skills, such as critical thinking, organization, time management, and study strategies. The primary core curriculum includes courses in Math and Science, Humanities, Phonics, and Physical Education. Students take Math and Science, as well as Humanities, in integrated 85-minute blocks each day. Enrichment courses include Engineering and Technology, Visual Arts, Theatre, Music, Mandarin, and Connections. Throughout the primary curriculum, students master concepts and skills that will allow them to excel in middle school and high school.

HUMANITIES (Grades 1–3)

The “Humanities” block, for grades 1–3, is a daily 85-minute class that combines language arts and social studies. Students will develop foundational reading comprehension and writing skills that are embedded within social studies content. Integrating instruction in this way allows students to learn concepts at a greater depth, building connections along the way. By providing a separate Phonics course along with additional Connections: Enrichment courses, students are able to accelerate the development of the foundational skills necessary for future academic success: fluency, reading comprehension, writing, spelling, grammar, structure and mechanics.

MATH AND SCIENCE (Grades 1–3)

The “Math and Science” block is a daily 85-minute class that is designed to integrate math and science. Students are typically a grade level higher than their peers and practice fundamental skills, explore topics, and demonstrate knowledge using manipulatives and hands-on approaches in the classroom. Throughout the year, topics spiral and build upon each other to strengthen mastery, further setting a strong foundation for future years. In addition to a structured math curriculum, students will also be introduced to science concepts such as: earth science, astronomy, and the physical sciences.



PHONICS (Grades 1–3)

The Phonics course sequence is based upon the understanding that the English language is a code, which students must learn to decode to become fluent readers. As such, students develop and master the decoding and spelling skills needed to read increasingly difficult texts and compose complex compositions. In Phonics, students master all basic phonograms, numerous advanced phonograms, and advanced phonemic awareness concepts.

CONNECTIONS: READING ENRICHMENT AND MATH ENRICHMENT

Enrichment courses are built into the school day multiple times per week. Each course is designed to reinforce and provide students additional instruction to practice and master concepts covered in their respective core courses: Literacy, Humanities, and Math. Enrichment courses are designed to further develop the foundational skills that focus on Reading Comprehension, Math, and Phonics. Time in class will also be spent completing a variety of cross-curricular projects emphasizing collaboration, discussion, critical thinking, and creativity. Students will experience firsthand how skills from multiple courses can be used to solve real-world problems, making interdisciplinary connections helping them to understand complex concepts while they continue to build stronger foundational skills and knowledge in both math and reading.





Specials May Include:

VISUAL ARTS (Grades 1–5)

In Visual Arts, students are introduced to a wide range of artistic techniques as they hone their fine motor skills while working with a variety of different materials. As students progress through the course sequence, they expand upon these skills by making cross-cultural and personal connections in their art. Students also receive instruction in art history, and explore the relationship between intent, context, and creative choice.

THEATRE (Grades 1–5)

Theatre introduces students to the different elements of drama and narrative. As they progress through the course sequence, students build upon their storytelling skills and work in groups to create and perform short scenes. Students also learn how to interpret and convey character, and work on revising, evaluating, and improvising dramatic scripts.

MUSIC (Grades 1–5)

In Music, students are introduced to the different elements of musical performance, theory, and history. As students progress through the music course sequence, they expand upon their musical knowledge by learning how to read musical notation, building their vocabulary to describe different styles of music, and participating in multi-part musical performances.



ENGINEERING AND TECHNOLOGY (Grades 1–4)

Engineering and Technology introduces students to the processes, tools, and techniques of engineering design. Students will also be introduced to various modes of technology (tablets and/or Chromebooks) to develop touch typing and basic computer literacy skills that are developmentally appropriate for their grade level. Students develop problem-solving, logic, and relationship skills through hands-on, real-world projects that integrate content from core courses with technology and design.

WRITING ENRICHMENT AND WRITING MASTERY (Grades 4–5)

In Writing Enrichment and Writing Mastery, students develop sentence, paragraph, and multi-paragraph writing skills through content-focused writing. Students practice writing in different disciplines using content from their History, Science, and English courses.

SPORK MATH

SPORK Math is comprised of the following courses: Arithmetic A (grade 4), and Arithmetic B (grade 5). SPORK Math is delivered through tablets, allowing us to update the curriculum every year, to ensure that we are responsive to our students' needs. This method of delivery facilitates rapid homework communication between teachers and students, making time spent in the classroom more productive. For example, while students are doing homework, they can mark the problems they are struggling with the most. Their teacher will receive that information in real-time and can come to class the next day with a lesson prepared to address those concepts. Long term, SPORK Math will help teachers identify the areas students struggle with the most, allowing them to adapt their lessons and plan for extra practice.





GRADES 1–3

COURSE OVERVIEW

** All courses are subject to change*

- Math and Science
- Humanities
- Phonics
- Connections: Reading/Math Enrichment
- Engineering and Technology
- Mandarin
- PE and Sports
- Fine Arts may include
 - Visual Arts
 - Theatre
 - Music

GRADES 4–5

COURSE OVERVIEW

** All courses are subject to change*

- English and Writing Enrichment (Grade 4)
- Math
 - Arithmetic A (Grade 4)
 - Arithmetic B (Grade 5)
- Science (Grade 4)
- History (Grade 4)
- Engineering and Technology (Grade 4)
- English and Writing Mastery (Grade 5)
- Physical Geography and Science (Grade 5)
- U.S. History (pre-contact Americas to Industrial Revolution) (Grade 5)
- PE and Sports
- Fine Arts
 - Visual Arts
 - Theatre
 - Music



EXTRACURRICULAR ACTIVITIES

Extracurricular activities enhance the learning experience and provide opportunities for enrichment, socialization, and achievement beyond the classroom. These activities allow students to interact with different groups, pursue individual interests, and develop new skills. To participate in extracurricular activities, students must exhibit good behavior and maintain a strong academic standing. As such, they learn to balance outside activities with advanced coursework, an important time management skill that will benefit them throughout their education.

EXTRACURRICULAR ACTIVITIES OFFERED AT BASIS PHOENIX PRIMARY MAY INCLUDE*:

- | | |
|------------------------|-------------------------|
| • Archery | • Gardening Club |
| • Arts and Crafts | • Junior Golf |
| • Backyard Games | • Knitting |
| • Badminton | • LEGO Club |
| • Basketball | • Literacy Club |
| • Board Games | • Minecraft |
| • Brain Games | • Robotics |
| • Ceramics | • Soccer |
| • Chess | • Stop Motion Animation |
| • Coding Games | • Textile Arts & Crafts |
| • Cooking Club | • Theater |
| • Dance | • Volleyball |
| • Dodgeball | • Yoga |
| • Firebird Ambassadors | |
| • Flag Football | |

** Extracurricular activities offered vary by campus and from year-to-year based on student interest.*



F

A

Q

WHAT ARE BASIS CHARTER SCHOOLS?

The BASIS Charter Schools network comprises 39 charter schools across Arizona, Louisiana, Texas, and Washington, D.C. All BASIS Charter Schools utilize the BASIS Charter School Curriculum, which encourages self-motivation and hard work, allows students to master advanced content and thoroughly prepares them for college.

HOW DO I APPLY?

All applications must be submitted through the online enrollment portal at enrollBASIS.com. Parents/guardians should complete and submit student enrollment applications during the Open Enrollment period. However, applications are accepted throughout the year. You may apply to more than one BASIS Charter School, but you must submit separate applications, per student, to each school. Applications do not need to be signed in order to be entered in the lottery. Applicants who are offered enrollment at a BASIS Charter School will be provided with instructions for accepting the offer, completing the online registration form, and submitting registration documents to the school.

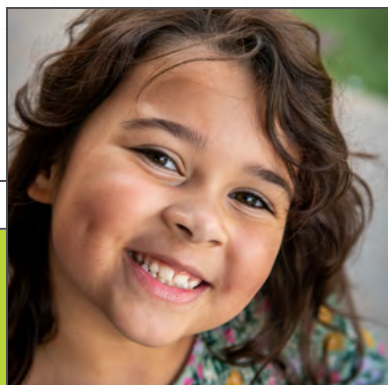
HOW DO THE LOTTERY AND WAITLIST WORK?

Every year, there is an Open Enrollment period for the following school year. Applications submitted during Open Enrollment and outside of Open Enrollment are processed differently. Please note that the exact Open Enrollment dates and lottery dates are determined on a year-to-year basis. Information will be available on enrollBASIS.com once this year's dates are finalized.

If you apply during Open Enrollment: If the number of applications received during Open Enrollment exceeds the number of openings (at any grade level), enrollment is determined by a lottery and waitlist. The Open Enrollment period for BASIS Charter Schools is NOT first-come, first-served. Instead, applicants are added to a lottery pool. To be included in the lottery, you need to apply by midnight on the last day of Open Enrollment. After the Open Enrollment period ends, lottery drawings are held. You will receive the results directly from the school(s) you applied to. Families that do not receive an enrollment offer from the lottery will be added to a waitlist.

If you apply outside of Open Enrollment: Applications submitted after the Open Enrollment period has ended will be added to a waitlist and processed on a first-come, first-served basis, following any applications received during Open Enrollment. Schools will continue to make offers to waitlisted applicants as seats become available. There is not a lottery for applications submitted outside of Open Enrollment.

BASIS Charter School enrollment policies are available for review in the enrollment application portal at enrollBASIS.com.



**F****A****Q**

WILL I HAVE TO PAY TUITION?

No. BASIS Phoenix Primary is tuition-free, with the exception of full-day kindergarten. The only payment required is a security deposit, which is held in the event that school property is lost or damaged. Barring any such damage, the deposit is refunded once the student leaves or graduates from the school.

WHAT IS THE SCHOOL-YEAR SCHEDULE?

The start date for each school is determined by the Head of School and leadership team, and then announced on the school's website. To reduce the chance of scheduling conflicts for BASIS Charter School families with students in multiple grade levels, or who attend different schools, we try to align our school calendars with district school calendars. To maximize academic instruction time, BASIS Charter Schools do not include professional development (in-service) days on the school calendar.

HOW MUCH HOMEWORK DO STUDENTS RECEIVE?

Homework volume differs by grade level and by student. For example, homework times range from 15 minutes in kindergarten to approximately one hour in grade 5.

HOW DO I PREPARE MY CHILD TO ATTEND A BASIS CHARTER SCHOOL?

To foster every student's successful transition into our advanced course of study, we provide academic and student support throughout the year, as well as optional summer orientation programs.



WHAT EXTRACURRICULAR OPPORTUNITIES ARE AVAILABLE?

BASIS Charter Schools offer extracurricular activities that enrich students' academic experience. We do our best to align extracurricular activities to serve our students' interests. As a result, extracurricular activities may not be identical at every BASIS Charter School. However, each campus offers an array of clubs and extracurricular activities in which students can participate.

DO YOU HAVE BEFORE AND AFTER SCHOOL PROGRAMS?

Yes. BASIS Charter Schools offer the Early Bird and Late Bird programs to assist parents/guardians whose schedules do not align with the schools' scheduled start and end times. The Early Bird program serves parents/ guardians whose days begin earlier than the school start time. During Early Bird, staff members supervise students in designated areas of the school. While our staff members do monitor students' safety and general well-being, we do not provide organized instruction or recreation during this time. Students are still expected to follow all school rules. The Late Bird program is a fee-based after-school program that serves parents/ guardians whose days end later than the school end time. During Late Bird, staff members supervise students in designated areas of the school. The Late Bird program is structured, so students have time to do homework, read, make up tests, etc.

DO YOU PROVIDE TRANSPORTATION?

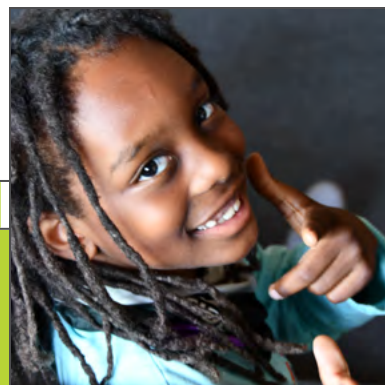
No. BASIS Charter Schools do not provide transportation for students at this time. However, we encourage members of our parent-volunteer booster clubs to identify carpool opportunities.

DO YOU PROVIDE SPECIAL EDUCATION SERVICES?

Yes. BASIS Charter Schools are public schools that provide a Free and Appropriate Public Education (FAPE) to students with disabilities who are currently eligible, or are determined eligible, to receive special education and related services. BASIS Charter Schools comply with all aspects of federal and state civil rights and disability laws, and we are committed to ensuring that all students who are eligible for special education and related services receive them.

Notice of Non-Discrimination: In accordance with Title VI of the Civil Rights Act of 1964, Title IX of the Education Amendments of 1972, Section 504 of the Rehabilitation Act of 1973, the Age Discrimination Act of 1975, Title II of the Americans with Disabilities Act of 1990, the Boy Scouts of America Equal Access Act and applicable state law, BASIS does not discriminate on the basis of actual or perceived race, color, religion, national origin, sex, age, disability, gender identity or expression, or any other classification protected by law in any of its business activities, including its educational programs and activities which comply fully with the requirements of state and federal law and Title IX. The following person has been designated to handle inquiries regarding BASIS' non-discrimination policies: Beverly Traver, Compliance and Equity Investigator, BASIS Educational Group, LLC., 7975 N. Hayden Rd, Scottsdale, AZ 85258, (480) 289-2088.*

**As used in this policy, the term "BASIS" refers to: BASIS Educational Group, LLC, BASIS Charter Schools, Inc., BASIS Texas Charter Schools, Inc., BDC, A Public School, Inc., BBR Schools, Inc., and all affiliated entities.*



Scan the QR code to view a
digital version of this brochure.



Phoenix Primary

11850 North 32nd Street | Phoenix, AZ 85028

